

# Zeus.

designed by David Fox



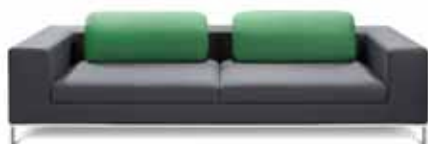
Description	Left hand modular sofa		Modular sofa		Right hand modular sofa		Armchair	
Product Code	SZS3A		SZS5A		SZS4A		SZS1A	
	£	€	£	€	£	€	£	€
Group 0	1,569	1,883	1,280	1,536	1,569	1,883	1,229	1,475
Group 1	1,632	1,959	1,323	1,588	1,632	1,959	1,287	1,545
Group 2	1,697	2,037	1,371	1,646	1,697	2,037	1,350	1,620
Group 3	1,867	2,241	1,495	1,794	1,867	2,241	1,520	1,824
Group 4	1,926	2,312	1,537	1,845	1,926	2,312	1,580	1,896
Group 5	2,058	2,470	1,632	1,959	2,058	2,470	1,713	2,056
Group 6	2,454	2,945	1,916	2,300	2,454	2,945	2,108	2,530
Group 7	2,881	3,458	2,224	2,669	2,881	3,458	2,534	3,041
Leather 1	2,278	2,734	1,781	2,138	2,278	2,734	1,872	2,247
Leather 2	2,597	3,117	2,006	2,408	2,597	3,117	2,160	2,592
Leather 3	2,918	3,502	2,235	2,682	2,918	3,502	2,460	2,952
Dimensions (mm)	Height 760 Width 1230 Depth 900 Seat height 410 Seat width 1000		Height 760 Width 1000 Depth 900 Seat height 410 Seat width 1000		Height 760 Width 1230 Depth 900 Seat height 410 Seat width 1000		Height 760 Width 850 Depth 870 Seat height 410 Seat width 600	
Weight	46.00kg		36.10kg		46.00kg		36.30kg	

## Product information

Chrome underframe, grey nylon glides  
Hardwood subframe  
CMHR foam



Zeus.



Description	Large sofa		Oval coffee table, MFC top		Oval dining table, MFC top	
Product Code	SZS2A		TZEC/OVLXXXXWHM/SIPE		TZED/OVLXXXXWHM/SIPE	
	£	€	£	€	£	€
White	-	-	250	300	305	366
Group 0	2,325	2,790				
Group 1	2,448	2,938				
Group 2	2,576	3,092				
Group 3	2,918	3,502				
Group 4	3,035	3,642				
Group 5	3,301	3,962				
Group 6	4,091	4,910				
Group 7	4,939	5,927				
Leather 1	3,552	4,263				
Leather 2	4,139	4,967				
Leather 3	4,724	5,669				
Dimensions (mm)	Height 750 Width 2500 Depth 900 Seat height 410 Seat width 1960		Height 520 Width 350 Depth 570		Height 700 Width 350 Depth 570	
Weight	85.00kg		12.70kg		13.00kg	

**Product information**

Chrome underframe, grey nylon glides  
Hardwood subframe  
CMHR foam

**Table information**

Tables supplied fully assembled  
18mm MFC top with matching ABS edging

**Table options**

White column, chrome collar,  
silver oval pedestal base POA  
Other table top and  
column finishes available POA

# The Designers



## Hilary Birkbeck

Hilary Birkbeck is a furniture and product designer who has been practising in the UK for 30 years. He has a wealth of experience and has provided product solutions for the UK commercial contract markets and domestic retail sectors (Harrods, Heals and John Lewis). He has great understanding of the global supply chain and manufacturing practices. His specialist areas are ergonomics, health and safety and product innovation. Hilary has ongoing activities with US, European and East European clients.



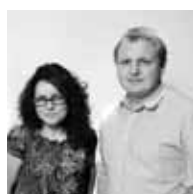
## Paul Brooks

Paul Brooks Design has placed itself in the centre of Europe. They have a European approach in the understanding of today's global market. Their belief is to work closely with their client, aiming to analyse their needs in order to deliver a totally appropriate solution – aesthetically, functionally and commercially. They are specialists in the area of office furniture and offer a full design and development package. They have a proven track record which assures informed design, flexibility, common sense and attention to detail.



## David Fox

David Fox Design is an award winning industrial and product design consultancy. His philosophy and work ethic promote elegance and refinement. His well balanced, innovatively detailed, simplistic forms give his work a timeless aesthetic. David works with a number of clients on furniture and industrial design related projects. In 2007 and 2009 he won the Mixology North Designer of the Year and with the Kalm chair won the FX Award.



## Craig Jones Design

Craig Jones Design is a London-based design practice committed to the development of high quality furniture and product design. Established in 2000, the company's aim is to provide a complete and fully resourced service to their clients that produce exciting designs with solid commercial viability. The company collaborates with design-led businesses which share their vision for beautiful and intelligent design solutions. They handle the process from conception through to production and have a proud record dealing with multi-national organisations on projects that have been manufactured and distributed in every corner of the globe.



## Roger Webb Associates

Established in 1989, Roger Webb Associates have become synonymous with creating award winning solutions for many of the key brands in the furniture industry within the UK and Europe. One of their key strengths is to go beyond design aesthetics and into designing how pieces are developed and manufactured. Their passion for design is specifically tailored to clients needs, supporting them to achieve a leading position in their market, providing solutions that are successful. The design service is focused through research, in close collaboration with the client to create and develop designs involving prototyping, product engineering and supporting the client by project managing the design into production and to market.

Working closely  
with designers,  
we are constantly  
developing new  
products

# Fabrics

Group 0	
Supplier	Range
Bradbury	Omega Plus
Bradbury	Pyra
Bradbury	Stirling
Camira	Advantage
Camira	Phoenix
Gabriel	Event

Group 1	
Supplier	Range
Camira	Xtreme Plus
Chieftain	Trimcell Classic
Gabriel	Fighter
Macflex	Oporto

Group 2	
Supplier	Range
Bradbury	Chancery
Bradbury	Checkers
Bradbury	Flamblend
Camira	Main Line Plus
Camira	Nexus
Camira	Urban Plus
Camira	Velvetine Plus
Chieftain	Just Colour
Chieftain	Trimcell Legend
Gabriel	Step
Gabriel	Step Melange

Group 3	
Supplier	Range
Abbotsford	Feast
Camira	Aquarius
Camira	Blazer 1 & 2
Camira	Denim
Camira	High-Tech
Camira	Intervene
Camira	Oxygen
Camira	Virtual Plus
Camira	24/7+
Connection	Syntec
Gabriel	Europost
Gabriel	Gaja
Vescom	Cres
Vescom	Delano
Vescom	Etna
Vescom	Estrela
Vescom	Furka
Vescom	Leone
Vescom	Logan

Group 4	
Supplier	Range
Camira	Acrobat
Camira	Blazer Check
Gabriel	Argos 2
Gabriel	Fame
Kvadrat	Lazio 2
Kvadrat	Messenger 3
Kvadrat	Pause 3
Spectrum	Colour Palette Vinyl
Vescom	Abruka
Vescom	Ailuk
Yarwood Synthetic	Dollaro 80
Yarwood Synthetic	Losana Etna
Yarwood Synthetic	Losana Ibiza

Group 5	
Supplier	Range
Abbotsford	Exhilerate
Bute	Rosslyn
Camira	Adrenaline
Camira	Craggan
Camira	Eton Stripe Plus
Camira	Monochrome Stripe Plus
Camira	Pinstripe Plus
Camira	Smarty Plus
Camira	Sting Plus
Camira	Stripes Plus 2
Chieftain	Multi Stretch
Gabriel	Code
Gabriel	Delhi 2
Kvadrat	Field
Kvadrat	Scuba
Vescom	Ambu
Vescom	Hainan
Vescom	Honshu
Vescom	Lombok
Vescom	Nadi
Yarwood Synthetic	Batani
Yarwood Synthetic	Natur

Group 6	
Supplier	Range
Bute	Elgin
Bute	Kames
Bute	Skye
Bute	Tiree
Bute	Troon
Bute	Turnberry
Gabriel	Arlanda
Gabriel	Blake
Gabriel	Byron
Gabriel	Comfort 8580
Gabriel	Digital 2
Gabriel	Luna
Kvadrat	Bass 3
Kvadrat	Cava 3
Kvadrat	Divina 3
Kvadrat	Divina Melange 2
Kvadrat	Flora 2
Kvadrat	Hallingdal 65
Kvadrat	Highfield
Kvadrat	Remix
Vescom	Antigua
Vescom	Bikar
Vescom	Keros
Vescom	Naura
Vescom	Lani
Vescom	Panay
Vescom	Saba
Vescom	Yuma

Group 7	
Supplier	Range
Gabriel	Comfort 8636
Vescom	Zanzibar

Leather 1	
Supplier	Range
Crest	Shelly
Crest	Vele
Yarwood	Albany
Yarwood	Style

Leather 2	
Supplier	Range
Camira	Classic Plus
Camira	Vintage Plus
Andrew Muirhead	Ingelston
Andrew Muirhead	Lustrana
Yarwood	Capri
Yarwood	Kensington
Yarwood	Mustang
Yarwood	New England
Yarwood	Verona

Leather 3	
Supplier	Range
Andrew Muirhead	Grampian
Andrew Muirhead	Sateen

When we receive your order we will check with our suppliers that the chosen fabric is in stock, then advise you of a suitable delivery time.

Please note: Not all of our standard fabrics, vinyls and leather are suitable for all of our products.

Quality and colour finishes on fabric are as per the fabric supplier's standards, therefore any issues relating to this fall outside of Connection's warranty and quality measurements.

Where a customer is supplying their own fabric, and the fabric does not appear in the above list, the following shall apply:

- £150 patterning charge to cover creating templates.
- A quantity of fabric must be supplied to Connection to facilitate creating new templates - 5m per soft seating product, 2m per task/meeting product. For larger sofas a greater quantity may be required. This fabric will be used in the templating/design process.
- Once the fabric is approved, the order will be processed on standard lead time (starting from the date of approval).
- In the event that the fabric is deemed unsuitable for the requested product, the patterning charge will be refundable.

For further information about using other fabrics or our fabric groupings, please contact our Customer Service Team on 01484 600100.